

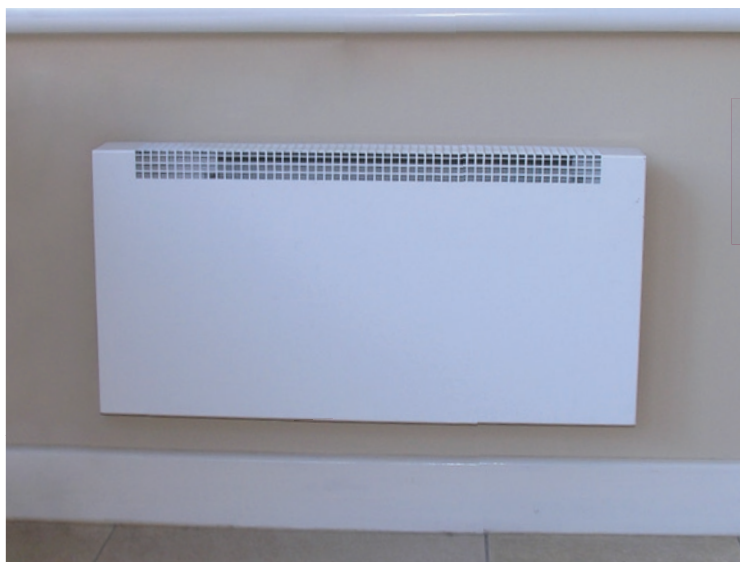
Uniclass L7522	EPIC L22
CI/SfB (56.84)	X



Wireless Heating Systems

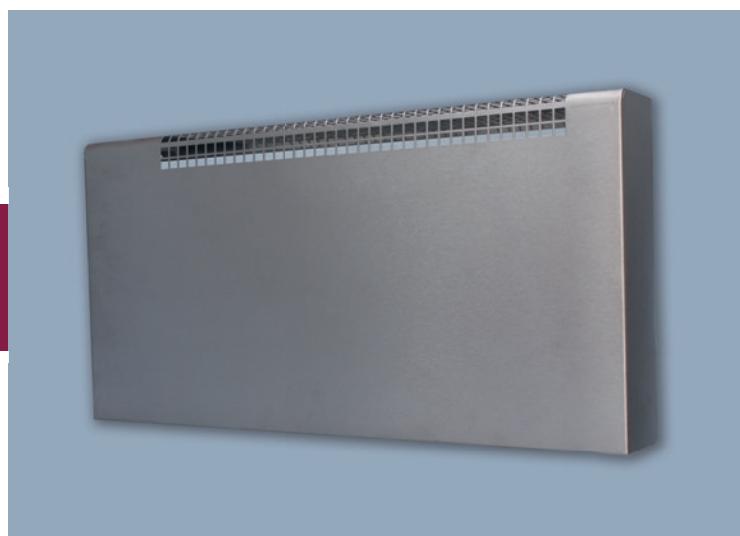
## COMPACT LST 43°C FAN HEATER

Fan Assisted Heater with Wireless Time and Temperature Control



**FAN NOISE 38dB**

**3 FINISHES TO CHOOSE FROM**



**ONLY RUNS WITH  
WCT100/TX CONTROLLER**

A simple to install wireless controlled heating system for the whole home.  
Perfect for conservatories and all rooms that require rapid warmth.

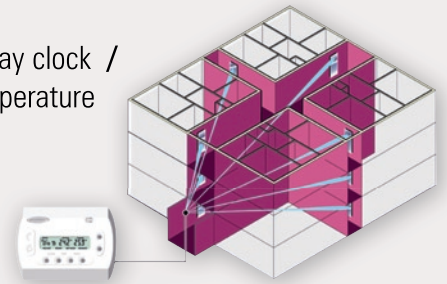
## RADIATOR (RECEIVER) KEY FEATURES:

Simply wire the heater to a fuse spur / Hidden wiring / No need to manually switch heaters "on" or "off"

## WIRELESS CONTROLLER (TRANSMITTER) KEY FEATURES:

Keylock mode / Simple to Programme / Up to 6 temperature settings per day / 7 day clock / Advance mode / Economy mode Holiday mode / Boost Mode / Inbuilt room temperature sensor / Frost protection / Powered by 2 x 1.5v Alkaline batteries

The TX control unit sends a 433MHz radio signal to each "registered" heater within a radius of 30 metres. Each RX panel heater has an inbuilt receiver designed to respond to a signal from the WCT 100/RX.



## HOW THE 1KW FAN ASSISTED HEATER WORKS

The 1kW fan assisted heater is designed to work with the WCT100TX controller. Using a WCT100TX, every day of the week can have up to six different room temperature settings programmed for times to suit the occupants of the property concerned.

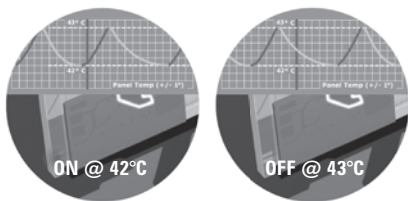
When 'Actual Temperature' shown in the WCT100TX display is below 'Target Temperature,' a radio signal pulse is sent to the heater thus calling for heat. Communication continues regularly whenever heating is called for. When the actual temperature reaches the current target temperature, heat is no longer required so the fan and element are switched off.

As temperature begins to fall the heating will be automatically restored and will continue to cycle on and off under the control of the WCT 100/TX timer/programmer. Running costs will depend upon the room size, building type, insulation, whether windows are double glazed, etc.

## SPECIFICATION:

LINE REF	CODE	DIMENSIONS (W X H X D)	ELEMENT (WATTS)	OUTPUT (WATTS)	OUTPUT (BTU'S)
<b>Powder Coated White</b>					
16.1	LST 1000/C/43/WM/PC/RX	600 x 300 x 80	1000	1000	3412
<b>Powder Coated Silver</b>					
16.2	LST 1000/C/43/WM/PCS/RX	600 x 300 x 80	1000	1000	3412
<b>Powder Coated Black</b>					
16.3	LST 1000/C/43/WM/PCB/RX	600 x 300 x 80	1000	1000	3412
<b>Brushed Stainless Steel</b>					
16.4	LST 1000/C/43/WM/SS/RX	600 x 300 x 80	1000	1000	3412
<b>Mirror Finish</b>					
16.5	LST 1000/C/43/WM/MF/RX	600 x 300 x 80	1000	1000	3412

## TEMPERATURE RANGE: NHS LST 43°C



Sharrocks Street, Wolverhampton WV1 3RP

Tel: 01902 457575 Fax: 01902 457797 Email: [sales@ecolec.co.uk](mailto:sales@ecolec.co.uk) Website: [www.ecolec.co.uk](http://www.ecolec.co.uk)